

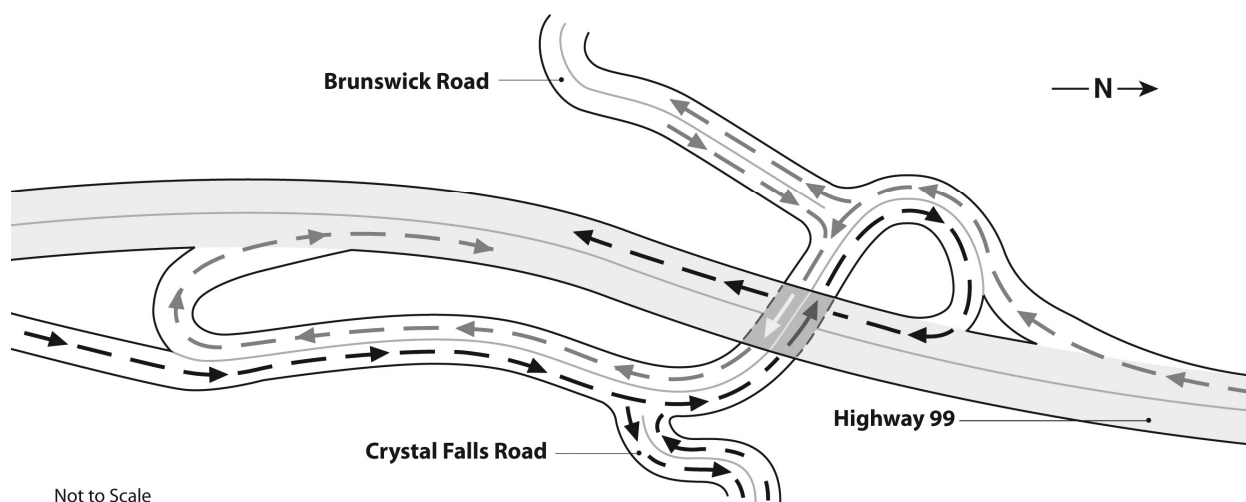
CONSTRUCTION BULLETIN

October 9, 2008

Traffic pattern change for Brunswick Road: new left-turn access

Residents of Brunswick Beach Road are advised of a traffic pattern change that will affect the current left turn into Brunswick Road. The current left hand turn into Brunswick Road will no longer be utilized. Northbound travellers will now exit to Brunswick Road approximately 200 metres south of the new bridge via the new exit ramp. Drivers will now go under the new highway overpass to access Brunswick Road.

Southbound traffic to Vancouver does not change, and drivers will access the highway on the new southbound highway lane. **This change is weather-dependent, but expected to be in effect on or around the week of October 14, 2008.**



if you have any questions regarding construction-related noise please call 604-629-8282.

Any questions or comments about the Sea-to-Sky Highway Improvement Project or this bulletin, please contact Scott Roberts, Community Relations Manager at 604 -775-1104 or by email at info@seatoskyimprovements.ca

For more information on the Sea-to-Sky Highway Improvement Project or closures and delays, please visit the Project website at www.seatoskyimprovements.ca