

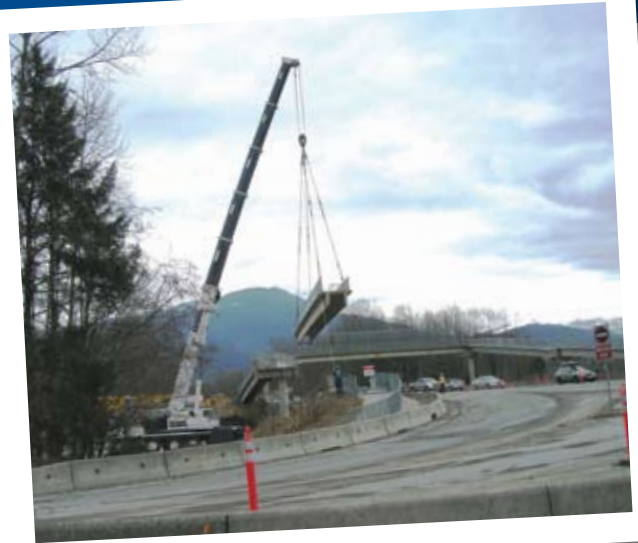
Snapshots from the Sea-to-Sky . . .

April 17, 2008 • Number 23

Improving connectivity in Squamish

Squamish's landmark pedestrian overpass at Centennial Way has been removed to make way for a new two-lane vehicle underpass with a sidewalk for pedestrians. The new underpass is being built between Centennial Way and the Mamquam River. It will improve over-all connectivity in Squamish, providing better access to the Brennan Park Leisure Centre for vehicles, cyclists and pedestrians as it connects Centennial Way with Logger's Lane. Other connectivity improvements in Squamish include a new pedestrian overpass at the Stawamus Chief which will connect a new southbound parking area beside Malamute Bluffs with the climbing areas and trails in the provincial park. Highway construction will maintain the connectivity of the local trails network under the north ends of the Mamquam Blind Channel and Mamquam Bridges and the existing pedestrian overpass near Mamquam School will be improved and rebuilt.

P.S. *The overpass was originally located on the Upper Levels Highway in North Vancouver. It was given to the District of Squamish by the Ministry of Transportation and installed at the Centennial Way location in 1999. The components are being stored while the municipality reviews options for reusing.*



Dismantling the old overpass at its Squamish location was accomplished over three nights, using an assortment of equipment including a heavy-lift crane to move each of the six 100,000 pound concrete support girders.

The Sea-to-Sky Highway Improvement Project *Improving safety, reliability and capacity*

www.seatoskyimprovements.ca • 604-775-1104 • info@seatoskyimprovements.ca