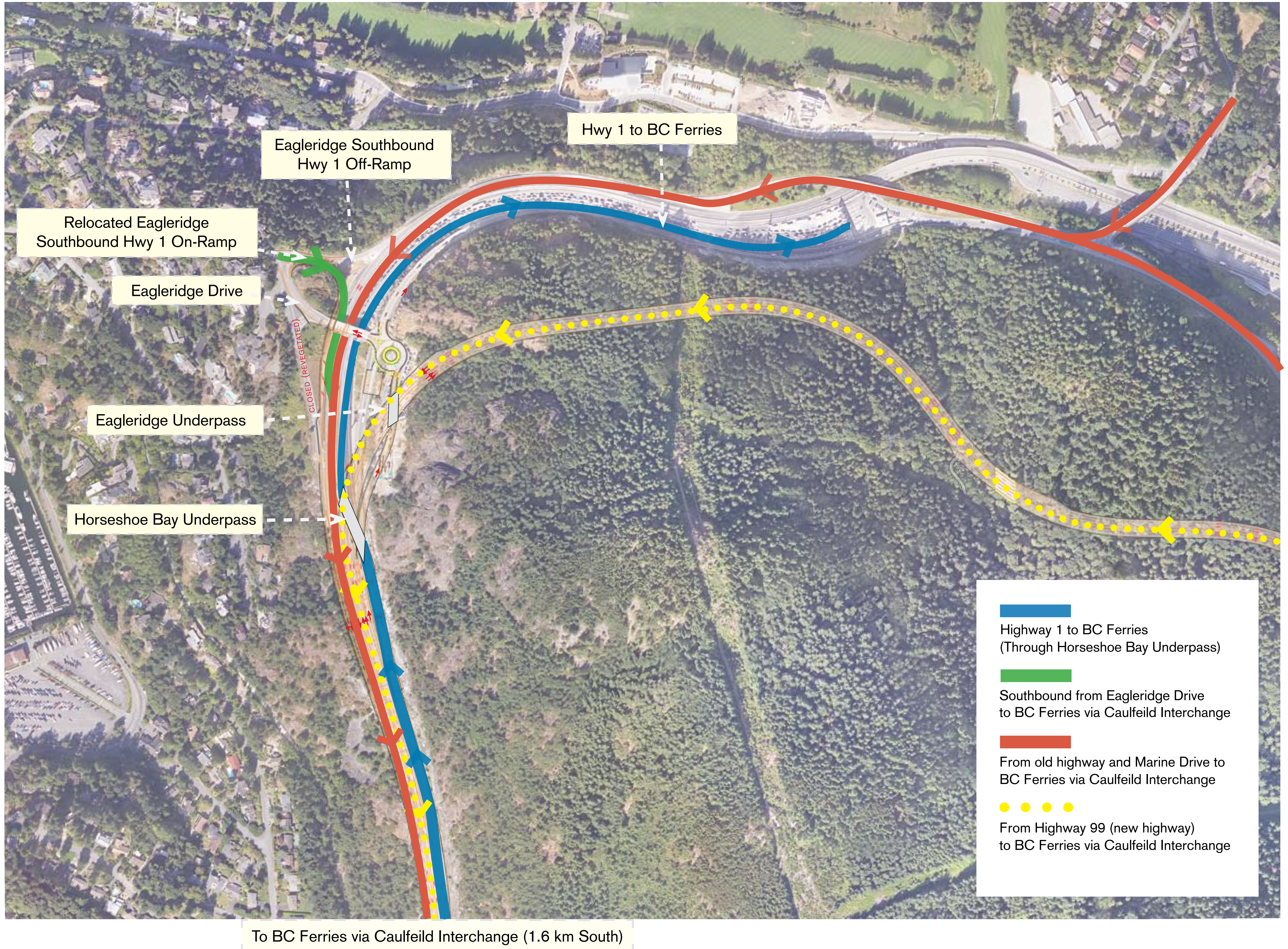


Eagleridge Interchange – Ferry Traffic



Eagleridge, Marine Drive, and Horseshoe Bay Residents

To go to the ferries, residents go south on Highway 1, exit at Caulfeild Interchange, cross over Highway 1, return north and follow the signage to the ferries.

Greater Vancouver Residents

To go to the Horseshoe Bay ferry terminal, take the first exit to Horseshoe Bay, cross under Highway 99 (the new highway), and get into the ferry ticketing area. If you stay left, you can follow this route into Horseshoe Bay Village.