

The highway design between Brandywine and Function Junction provides improved safety, reliability and capacity by:

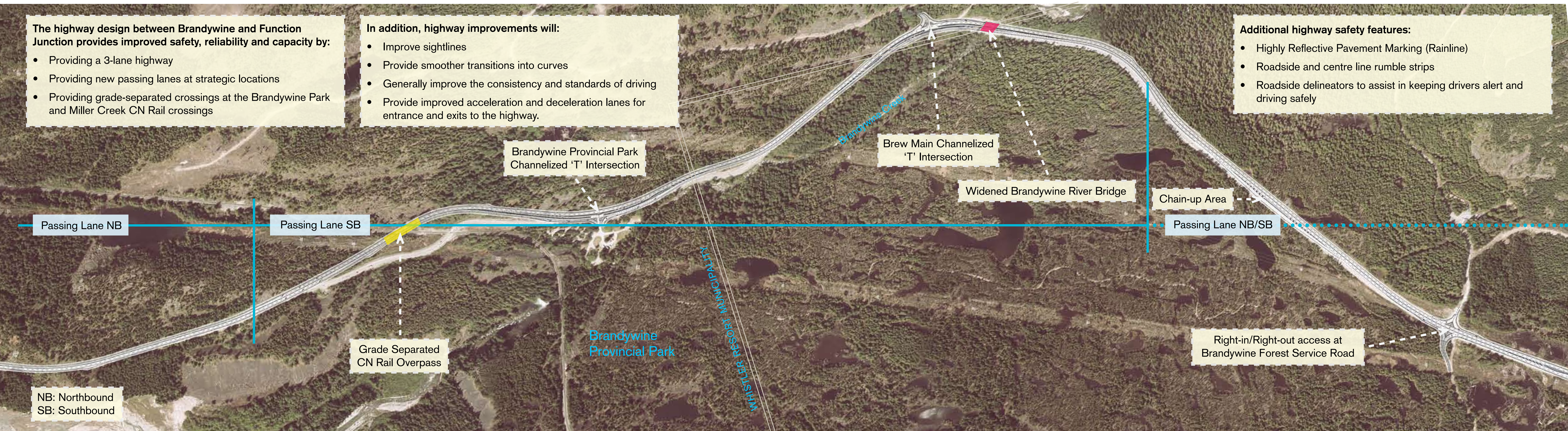
- Providing a 3-lane highway
- Providing new passing lanes at strategic locations
- Providing grade-separated crossings at the Brandywine Park and Miller Creek CN Rail crossings

In addition, highway improvements will:

- Improve sightlines
- Provide smoother transitions into curves
- Generally improve the consistency and standards of driving
- Provide improved acceleration and deceleration lanes for entrance and exits to the highway.

Additional highway safety features:

- Highly Reflective Pavement Marking (Rainline)
- Roadside and centre line rumble strips
- Roadside delineators to assist in keeping drivers alert and driving safely



NB: Northbound
SB: Southbound